



2024 Camry

[www.toyotausvi.com](http://www.toyotausvi.com)

# 2024 Camry

Striking presence

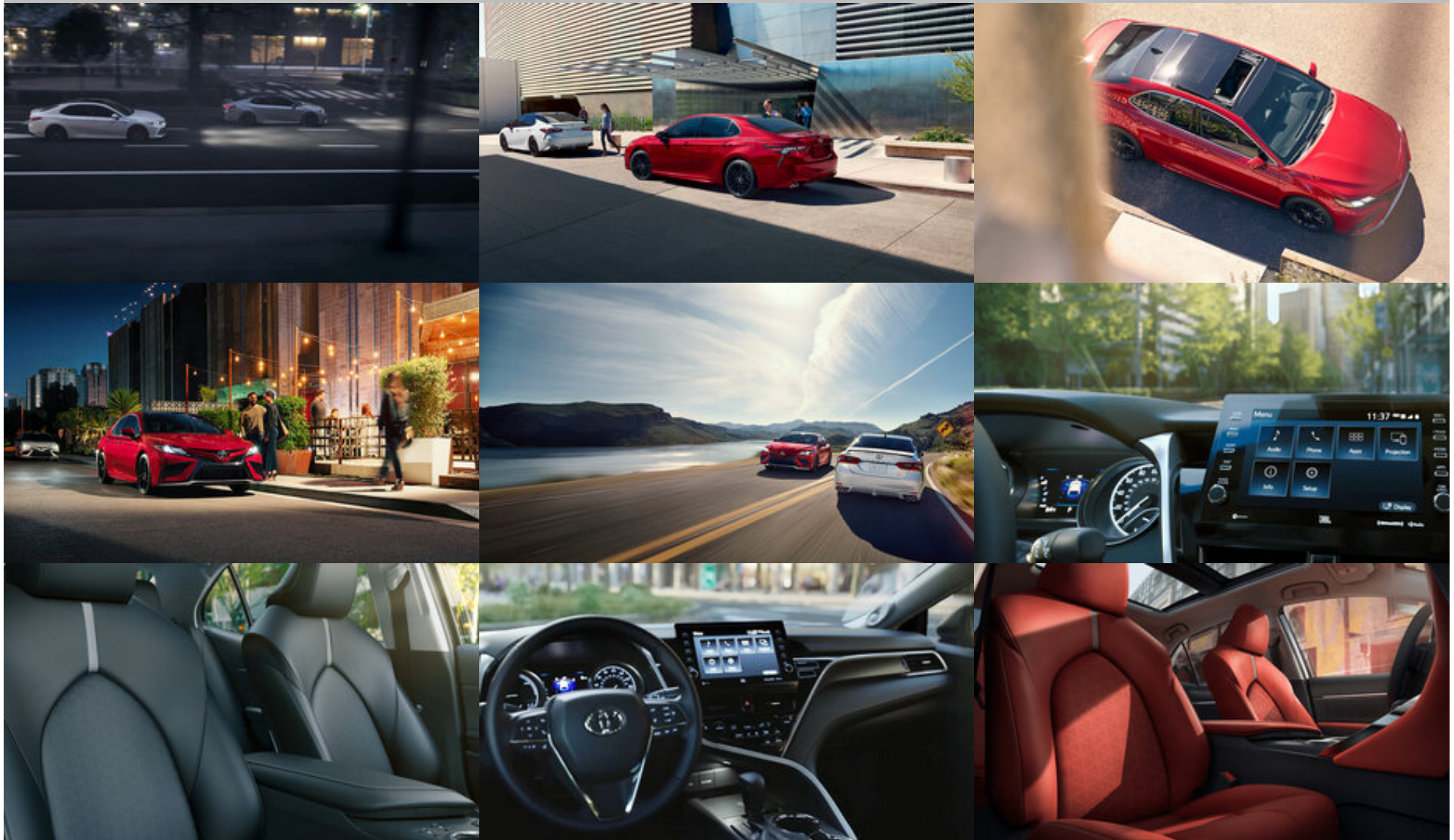


The vehicle and/or its accessories may not be available in US Virgin Islands. The Audio Multimedia System is available only on selected Toyota 2018 models and forth.



## 2024 Camry

[www.toyotausvi.com](http://www.toyotausvi.com)



The vehicle and/or its accessories may not be available in US Virgin Islands. The Audio Multimedia System is available only on selected Toyota 2018 models and forth.

## Camry Highlights

### More power

Available V6 engine & 208 HP<sup>1</sup>

### Better Performance

Up to 52 miles per gallon<sup>2</sup>

### Handling

Available Sport-Tuned Suspension

### Audio Multimedia

Available 9-In. Touchscreen

### Safety

Toyota Safety Sense™ 2.5+<sup>3</sup>

---

The vehicle and/or its accessories may not be available in US Virgin Islands. The Audio Multimedia System is available only on selected Toyota 2018 models and forth.

## Dynamic styling

Its bold, yet elegant, design leaves a mark on the road. From its streamlined grill to the lines of its tires, the 2024 Camry turns heads wherever it goes.



## Modern and more efficient

Experience the powertrain most efficient and powerful offered since the Hybrid debuted in 2007. In the hybrid model, the Toyota Hybrid System combines the output of the 2.5-liter Dynamic Force four-cylinder engine and an electric motor (MG1), while using that motor and a second motor (MG2) for hybrid battery<sup>4</sup> charging.



## Have everything within reach!

The functionality and technology of the 2024 Camry XSE provides information through three interconnected displays: a 10-inches color display and a 7-inches multiple information display in the instrument panel integrated in the center console.




## Remote Connect<sup>5</sup>

Stay connected to your car even when you don't remember where you parked it. This feature will help you locate your Camry XSE and also monitor it in case it is handled by a designated driver.



# Specifications<sup>6</sup>

Standard <input checked="" type="checkbox"/>  Available <input type="checkbox"/>  Not Available <input type="checkbox"/>	2600	2605	2602	2607	2619
	<b>Camry LE</b>	<b>Camry XSE</b>	<b>Camry SE</b>	<b>Camry TRD</b>	<b>Camry SE Hybrid Nightshade</b>
	\$29,017	\$40,560	\$32,659	\$36,802	\$35,779
<b><u>MPG / Other / Price</u></b>					
<b>Price</b>					
Starting MSRP <sup>7</sup>	\$29,017	\$40,560	\$32,659	\$36,802	\$35,779
<b>Mileage Estimates</b>					

Mileage estimates (MPG city/highway/combined) <sup>8</sup>	28/39/32	22/32/26	28/39/32	22/31/25	44/47/46
EPA-estimated MPGe (combined) <sup>9</sup>	n/a	n/a	n/a	n/a	n/a
<div> <b>ToyotaCare</b><sup>10</sup></div>					
No cost maintenance plan <sup>11</sup>	\$0 (No Cost)	\$0 (No Cost)	\$0 (No Cost)	\$0 (No Cost)	\$0 (No Cost)
24-hour Roadside Assistance <sup>11</sup>	\$0 (No Cost)	\$0 (No Cost)	\$0 (No Cost)	\$0 (No Cost)	\$0 (No Cost)
<b><u>Exterior</u></b>					
Bi-LED combination headlights with black trim and auto on/off feature	—	—	✓	✓	✓
LED Daytime Running Lights (DRL) with on/off feature	✓	✓	✓	✓	✓
LED headlights with LED accents lights, black trim and auto on/off feature	—	✓	—	—	—

Bi-LED combination headlights with auto on/off feature	✓	—	—	—	—
LED combination taillights with black trim	✓	—	✓	✓	✓
LED taillights with black trim	—	✓	—	—	—
Dark gray front grille	✓	—	—	—	—
Black front grille with sport mesh lower grille insert	—	—	✓	—	✓
Gloss-black front grille with sport mesh lower grille insert	—	✓	—	✓	—
Color-keyed sport side rocker panels	—	✓	✓	—	✓
Black window trim	—	—	—	✓	✓
Two-tone exterior color (color-keyed body with black roof) <sup>12</sup>	—	—	—	✓	—
Color-keyed power outside mirrors	✓	—	—	—	—

Black heated power outside mirrors with turn signal indicators	—	—	—	—	✓
Black heated power outside mirrors with turn signal and Blind Spot Monitor (BSM) indicators	—	—	—	✓	○
Color-keyed heated power outside mirrors with turn signal and Blind Spot Monitor (BSM) indicators	—	✓	✓	—	—
Color-keyed outside door handles	✓	—	—	—	✓
Color-keyed outside door handles with touch sensor lock/unlock feature	—	✓	✓	✓	—
Panoramic glass roof with front power tilt/slide moonroof	—	✓	—	—	—
19-in. x 8.5-in. TRD matte-black alloy wheels	—	—	—	✓	—
19-in. gloss-black alloy wheels	—	✓	—	—	—
18-in. black machined-finish alloy wheels	—	—	✓	—	—



19-in. TRD matte-bronze-finished alloy wheels	—	—	—	—	✓
17-in. alloy wheels	✓	—	—	—	—
Matte-black center cap with red TRD logo	—	—	—	✓	—
Washer-linked intermittent windshield wipers	✓	✓	✓	✓	✓
High Solar Energy-Absorbing (HSEA) glass	✓	✓	✓	✓	✓
Acoustic noise-reducing front windshield	✓	✓	✓	✓	✓
Color-keyed rear spoiler	—	✓	✓	—	—
Black rear spoiler	—	—	—	—	✓
TRD gloss-black pedestal rear spoiler	—	—	—	✓	—

--	--	--	--	--	--

TRD gloss-black front splitter, side aero skirts, and rear diffuser with red pinstriping	—	—	—	✓	—
TRD cat-back dual exhaust with polished stainless steel tips	—	—	—	✓	—
Dual exhaust with quad chrome tips	—	✓	—	—	—
Single exhaust	✓	—	—	—	—
Single exhaust with dual chrome tips	—	—	✓	—	✓
In-glass AM/FM antenna	✓	✓	✓	✓	—
Black roof-mounted shark-fin antenna	—	✓	—	✓	✓
Black rear Toyota emblem and "CAMRY" lettering	—	—	—	✓	✓
Black SE badge	—	—	—	—	✓
Red TRD badge	—	—	—	✓	—

## Interior

Qi-compatible wireless smartphone charging with charge indicator light	—	✓	—	—	—
Multi-function in-key remote keyless entry system with lock, two-stage unlock, panic, trunk-release functions and remote illuminated entry	✓	—	—	—	—
Smart Key System on front doors and trunk with Push Button Start, remote keyless entry system and remote illuminated entry	✓	✓	✓	✓	✓
Power door locks with shift-linked automatic locking feature with anti-lockout feature	✓	✓	✓	✓	✓
Two front and two rear cup holders; two front door and two rear bottle holders	✓	✓	✓	—	✓
Two front cup holders; two front door and two rear bottle holders	—	—	—	✓	—
One 12V auxiliary power outlet <sup>13</sup>	✓	✓	✓	✓	✓

One USB-C charge port <sup>14</sup>	✓	✓	✓	✓	✓
Electric Parking Brake (EPB) with Brake Hold function	—	✓	—	✓	✓
Foot pedal parking brake	✓	—	✓	—	—
Brake Hold <sup>15</sup>	—	✓	—	✓	✓
Full-Speed Range Dynamic Radar Cruise Control (DRCC)	—	✓	—	✓	✓
Dynamic Radar Cruise Control (DRCC)	✓	—	✓	—	—
Dual zone automatic climate control with air filter	✓	—	✓	—	—
Single-zone automatic climate control with air filter	—	—	—	✓	—
Dual zone automatic climate control with air filter and rear-seat vents	—	✓	—	—	—

Dual zone automatic climate control with air filter, electric compressor and humidity sensor	—	—	—	—	✓
4.2-in. TFT Multi-Information Display (MID) with odometer, outside temperature, fuel economy and trip information, current/average fuel economy, distance to empty, average speed, trip distance with timer, and warning messages	✓	—	—	—	—
4.2-in. TFT Multi-Information Display (MID) with odometer, outside temperature, fuel economy and trip information, current/average fuel economy, distance to empty, average speed, trip distance with timer, TPMS <sup>16</sup> and warning messages	—	—	✓	—	—
4.2-in. TFT Multi-Information Display (MID) with TRD start-up animation, odometer, outside temperature, fuel economy and trip information, current/average fuel economy, distance to empty, average speed, trip distance with timer, TPMS <sup>16</sup> and warning messages	—	—	—	✓	—

TRD instrumentation with red-illuminated accents	—	—	—	✓	—
4.2-in. TFT Multi-Information Display (MID) with odometer, outside temperature, fuel economy and trip information, current/average fuel economy, distance to empty, average speed, trip distance with timer, hybrid system information, energy monitor, TPMS <sup>16</sup> and warning messages	—	—	—	—	✓
7-in. TFT Multi-Information Display (MID) with customizable settings, odometer, outside temperature, fuel economy and trip information, current/average fuel economy, distance to empty, average speed, trip distance with timer, TPMS, <sup>16</sup> scheduled maintenance and warning messages	—	✓	—	—	—
Fabric-trimmed front seats with passenger side seatback pocket; 8-way power-adjustable driver's seat with power lumbar support; 6-way adjustable front passenger seat	✓	—	—	—	—

Sport SofTex®-trimmed <sup>17</sup> front seats with fabric inserts, seatback pockets; 8-way power-adjustable driver's seat with power lumbar support; 6-way adjustable front passenger seat	—	—	✓	—	✓
Sport SofTex®-trimmed <sup>17</sup> front seats with red seatbelts and stitching, red-stitched TRD headrest logo, seatback pockets; 8-way power-adjustable driver's seat with power lumbar support; 6-way adjustable front passenger seat	—	—	—	✓	—
Leather-trimmed front seats with seatback pockets; 8-way power-adjustable driver's seat with power lumbar support; 8-way power-adjustable front passenger seat	—	✓	—	—	—
Fixed rear seat	—	—	—	✓	—
Rear adjustable headrests	—	✓	—	—	—
60/40 split fold-down rear seat with center armrest with cup holders	✓	✓	✓	—	✓
Multi-stage heated front seats	—	✓	—	—	—



Tilt/telescopic 3-spoke steering wheel with audio, Multi-Information Display (MID), <i>Bluetooth</i> ® <sup>18</sup> hands-free phone, voice-command, Dynamic Radar Cruise Control (DRCC) <sup>19</sup> , and Lane Departure Alert (LDA) controls <sup>20</sup>	✓	—	—	—	—
Leather-trimmed tilt/telescopic 3-spoke steering wheel with paddle shifters, audio, Multi-Information Display (MID), <i>Bluetooth</i> ® <sup>18</sup> hands-free phone, voice-command, Dynamic Radar Cruise Control (DRCC) <sup>19</sup> and Lane Departure Alert (LDA) controls <sup>20</sup>	—	✓	✓	—	✓
Leather-trimmed tilt/telescopic 3-spoke steering wheel with red stitching, paddle shifters, audio, Multi-Information Display (MID), <i>Bluetooth</i> ® <sup>18</sup> hands-free phone, voice-command, Dynamic Radar Cruise Control (DRCC) <sup>19</sup> , and Lane Departure Alert (LDA) controls <sup>20</sup>	—	—	—	✓	—
3-mode switch (Eco, Normal, Sport)	✓	✓	✓	✓	—
4-mode switch (EV, <sup>21</sup> Eco, Normal, Sport)	—	—	—	—	✓

10-in. color Head-Up Display (HUD) with speedometer, shift position, TSS 2.5+ <sup>3</sup> indicators, audio, phone, and outside temperature and adjustable brightness	—	✓	—	—	—
Soft-material upper door trim	✓	✓	✓	✓	✓
Linear dark interior trim	✓	—	✓	—	✓
Patterned-metal interior trim	—	✓	—	✓	—
Interior silver door handles	✓	✓	✓	✓	✓
Red-stitched instrument panel and shift boot	—	—	—	✓	—
Aluminum sport pedals	—	—	—	✓	—
Black leather-trimmed shift knob with red stitching and debossed TRD logo	—	—	—	✓	—
Black floor mats <sup>22</sup> with red Camry TRD logo and red outline	—	—	—	✓	—

Rear window defogger and timer	✓	✓	✓	✓	✓
Power windows with auto up/down, jam protection in all positions and retained-power features	✓	✓	✓	✓	✓
Day/night rearview mirror	✓	—	✓	✓	✓
Auto-dimming rearview mirror	—	✓	—	—	○
Overhead console with maplights, HomeLink® <sup>23</sup> universal transceiver	—	✓	✓	—	—
Overhead console with maplights, sunglasses storage, HomeLink® <sup>23</sup> universal transceiver	—	—	—	—	○
Overhead console with maplights and sunglasses storage	—	—	—	—	✓
Covered center console, armrest and storage	✓	✓	✓	✓	✓
Passenger-side illuminated glove compartment	✓	✓	✓	✓	✓

One USB charge and media port (1.5A) <sup>14</sup>	✓	✓	✓	✓	✓
Dual sun visors with sliding extensions	✓	—	✓	✓	✓
Dual sun visors with sliding extensions and illuminated vanity mirrors	—	✓	✓	—	—

## Audio Multimedia

<p>Audio — 7-in touchscreen, 6 speakers, Android Auto™<sup>24</sup> &amp; other Toyota Connected Services<sup>25</sup> compatible, USB media port, USB charge port, hands-free phone capability and music streaming via Bluetooth®<sup>18</sup> wireless technology.</p>	✓	—	✓	—	✓
<p>Audio Plus with JBL — 9.0-in. touchscreen, 9 JBL® speakers including subwoofer and amplifier, USB media port, USB charge port, hands-free phone capability and music streaming via Bluetooth® wireless technology, Android Auto™ &amp; other Toyota Connected Services compatible.</p>	—	✓	—	✓	—

## Connected Services

<p>Safety Connect®<sup>26</sup> — includes Emergency Assistance, Enhanced Roadside Assistance, Automatic Collision Notification and Stolen Vehicle Locator. Up to 1-year trial subscription. Subscription required. 4G network dependent.</p> <p>Service Connect<sup>27</sup> — receive personalized maintenance updates and vehicle health reports. Subscription required. 4G network dependent.</p>	<p>1-year trial subscription</p> <p>—</p>	<p>1-year trial subscription</p> <p>Up to 10-year trial subscription</p>	<p>1-year trial subscription</p> <p>—</p>	<p>1-year trial subscription</p> <p>—</p>	<p>1-year trial subscription</p> <p>—</p>
<p>Remote Connect<sup>5</sup> — remotely interact with your vehicle through the Toyota app via your smartwatch. Allowing you to lock/unlock doors, start and stop the vehicle, locate your last parked location, check vehicle status and monitor guest drivers. 1-year trial subscription. Subscription required. 4G network dependent.</p>	<p>—</p>	<p>1-year trial subscription</p>	<p>—</p>	<p>—</p>	<p>—</p>

**Safety/Convenience**

<p>Toyota Safety Sense™ 2.5+ (TSS 2.5+)<sup>3</sup></p> <p>— Pre-Collision System with Pedestrian Detection (PCS w/PD)<sup>28</sup>, Lane Departure Alert with Steering Assist (LDA w/SA)<sup>20</sup>, Automatic High Beams (AHB)<sup>29</sup>, Lane Tracing Assist (LTA)<sup>30</sup> and Full-Speed Range Dynamic Radar Cruise Control (DRCC)<sup>31</sup></p>	—	✓	—	✓	✓
<p>Toyota Safety Sense™ 2.5+ (TSS 2.5+)<sup>3</sup></p> <p>— Pre-Collision System with Pedestrian Detection (PCS w/PD)<sup>28</sup>, Lane Departure Alert with Steering Assist (LDA w/SA)<sup>20</sup>, Automatic High Beams (AHB)<sup>29</sup>, Lane Tracing Assist (LTA)<sup>30</sup> and Dynamic Radar Cruise Control (DRCC)<sup>19</sup></p>	✓	—	✓	—	—
<p>Star Safety System™ — includes Enhanced Vehicle Stability Control (VSC),<sup>32</sup> Traction Control (TRAC), Anti-lock Brake System (ABS), Electronic Brake-force Distribution (EBD), Brake Assist (BA) and Smart Stop Technology® (SST)<sup>33</sup></p>	✓	✓	✓	✓	✓
<p>Safety Connect®<sup>26</sup> — includes Emergency Assistance, Stolen Vehicle Locator,<sup>34</sup> Roadside Assistance<sup>35</sup> and Automatic Collision Notification.</p> <p>Available by subscription after 1-year trial<sup>36</sup> has ended. 4G network dependent.</p>	✓	✓	✓	✓	✓

Driver and front passenger Whiplash-Injury-Lessening (WIL) seats <sup>37</sup>	✓	✓	✓	✓	✓
LATCH (Lower Anchors and Tethers for CHildren) includes lower anchors on outboard rear seats	✓	✓	✓	✓	✓
3-point seatbelts for all seating positions; driver-side Emergency Locking Retractor (ELR) and Automatic/Emergency Locking Retractor (ALR/ELR) on all passenger seatbelts	✓	✓	✓	✓	✓
Ten airbags — includes driver and front passenger Advanced Airbag System, driver and front passenger seat-mounted side airbags, driver and front passenger knee airbags, rear seat-mounted side airbags, and front and rear side curtain airbags	✓	✓	✓	✓	✓
Collision sensors: deactivate high-voltage battery	—	—	—	—	✓
Side-impact door beams	✓	✓	✓	✓	✓
Front and rear energy-absorbing crumple zones	✓	✓	✓	✓	✓



Energy-absorbing collapsible steering column	✓	✓	✓	✓	✓
Tire Pressure Monitor System (TPMS) <sup>16</sup>	✓	—	—	—	—
Tire Pressure Monitor System (TPMS) <sup>16</sup> with direct pressure readout	—	✓	✓	✓	✓
Child-protector rear door locks and power window lockout control	✓	✓	✓	✓	✓
Rear-Seat Reminder <sup>38</sup>	✓	✓	✓	✓	✓
Blind Spot Monitor (BSM) with Rear Cross-Traffic Alert (RCTA)	—	✓	✓	✓	○
Hill Start Assist Control (HAC)	✓	✓	✓	✓	✓
Anti-theft system with alarm	✓	✓	✓	✓	✓
Integrated backup camera with projected path	✓	—	✓	✓	✓

Integrated backup camera with dynamic gridlines	—	✓	—	—	—
Automatic engine shut off	✓	✓	✓	✓	✓
<b><u>Warranty</u></b>					
<b>Warranty</b>					
Corrosion/Perforation: 60 months/Unlimited mileage	✓	✓	✓	✓	✓
Emission Control: Component Defect for Related parts 36 months/36,000 miles	—	—	—	—	✓
Emission Control: Performance and Component Defect for Specified Major Emission Control Components 96 months/80,000 miles	—	—	—	—	✓
Emission Control: Performance-Related parts 24 months/24,000 miles	—	—	—	—	✓
Powertrain: 60 months/60,000 miles	✓	✓	✓	✓	✓

Hybrid System & Battery: 96 months/100,000 miles	—	—	—	—	✓
Basic warranty 36 months/36,000 miles	✓	✓	✓	✓	✓

**Mechanical/Performance**

**Engine**

208 combined system net horsepower	—	—	—	—	✓
2.5-Liter Dynamic Force 4-Cylinder DOHC D-4S Injection Dual Variable Valve Timing with intelligence (VVT-i) and Eco, Normal, Sport and EV drive modes; 176 HP @ 5700 rpm; 163 lb.-ft. @ 5200 rpm	—	—	—	—	✓
3.5-Liter V6 DOHC D-4S Injection Dual Variable Valve Timing with intelligence (VVT-i) and Eco, Normal and Sport drive modes; 301 hp @ 6600 rpm; 267 lb.-ft. @ 4700 rpm	—	✓	—	✓	—

2.5-Liter Dynamic Force 4-Cylinder DOHC D-4S Injection Dual Variable Valve Timing with intelligence (VVT-i) and Eco, Normal and Sport drive modes; 203 hp @ 6600 rpm; 184 lb.-ft. @ 5000 rpm	✓	—	✓	—	—
Compression ratio	13.0 : 1	11.8 : 1	13.0 : 1	11.8 : 1	14.0 : 1
Emission rating					
Super Ultra-Low Emission Vehicle (SULEV)	✓	—	✓	—	✓
Ultra Low Emission Vehicle (ULEV)	—	✓	—	✓	—
Electric Motor					
Hybrid System Net Power	—	—	—	—	208 HP
Power output	—	—	—	—	118 HP (88 kW)
Torque	—	—	—	—	149 lb.-ft. (202 N·m)

Electric Motor Voltage	—	—	—	—	650 V (max sys.)
Traction Battery					
Sealed Lithium-ion (Li-ion)	—	—	—	—	✓
Traction Battery Voltage	—	—	—	—	259.0 V
Transmission					
Direct Shift-8AT 8-speed Electronically Controlled automatic Transmission with intelligence (ECT-i) with sequential shift mode	✓	✓	✓	✓	—
Electronically controlled Continuously Variable Transmission (ECVT) with sequential shift mode	—	—	—	—	✓
Drivetrain					
Front-Wheel Drive (FWD)	✓	✓	✓	✓	✓

Body Construction					
Unitized body with front and rear anti-vibration sub-frames	✓	✓	✓	✓	✓
Increased thickness underbody braces and added rear seat V-bracing	—	—	—	✓	—
Suspension					
Independent MacPherson strut front suspension; multi-link rear suspension; front strut tower bracing; TRD track-tuned front and rear coil springs, shock absorbers and stabilizer bars	—	—	—	✓	—
Independent MacPherson strut front suspension with stabilizer bar; multi-link rear suspension with stabilizer bar, sport-tuned shock absorbers and springs, and front strut tower bracing	—	✓	✓	—	✓
Independent MacPherson strut front suspension with stabilizer bar; multi-link rear suspension with stabilizer bar and front strut tower bracing	✓	—	—	—	—

Steering					
Turning circle diameter, curb to curb (ft.)	37.4	38.0	38.0	38.0	38.0
Electric Power Steering (EPS); power-assisted rack-and-pinion	✓	✓	✓	✓	✓
Brakes					
Power-assisted ventilated 12-in. front disc brakes; solid 11.06-in. rear disc brakes and integrated regenerative braking	—	—	—	—	✓
Power-assisted ventilated 12.9-in. front disc brakes with dual-piston calipers; solid 11.06-in. rear disc brakes; red-painted front and rear calipers; unique brake booster and pedal stiffness tuning	—	—	—	✓	—
Active Cornering Assist (ACA)	—	—	—	✓	—
Power-assisted ventilated 12-in. front disc brakes with single-piston calipers; solid 11.06-in. rear disc brakes	✓	✓	✓	—	—



**Dimensions**

**Exterior Dimensions (in.)**

Overall length	192.1	192.7	192.7	194.6	192.7
Overall height	56.9	56.9	56.9	56.3	56.9
Overall width	72.4	72.4	72.4	73.1	72.4
Track (front/rear)	62.6/62.8	62.6/62.6	62.2/62.6	62.6/63.0	62.2/62.6
Ground clearance	5.7	5.7	5.7	5.7	5.7
Wheelbase	111.2	111.2	111.2	111.2	111.2

**Interior Dimensions front/rear (in.)**

Shoulder room	57.7/55.7	57.7/55.7	57.7/55.7	57.7/55.7	57.7/55.7
---------------	-----------	-----------	-----------	-----------	-----------

Head room front/rear without moonroof (with moonroof)	38.3/38.0 (37.5/38.0)	38.3/38.0 (37.5/38.0)	38.3/38.0 (37.5/38.0)	38.3/38.0 (N/A)	38.3/37.6 N/A
Hip room	55.4/54.7	55.4/54.7	55.4/54.7	55.4/54.7	55.4/54.6
Leg room	42.1/38.0	42.1/38.0	42.1/38.0	42.1/38.0	42.1/38.0
<b><u>Weights/Capacities</u></b>					
<b>Capacity / Volume</b>					
Seating	5	5	5	5	5
Curb weight (lb.)	3310	3585	3350	3575	3535
Cargo volume, rear seatbacks up (cu. ft.) <sup>39</sup>	15.1	15.1	15.1	15.1	15.1
Fuel tank (gal.)	15.8	15.8	15.8	15.8	13.2
EPA passenger volume (cu. ft.) without moonroof	100.4	100.4	100.4	100.4	99.9

EPA passenger volume (cu. ft.) with moonroof	99.3	99.3	99.3	N/A	N/A
<b><u>Tires</u></b>					
<b>Spare</b>					
Temporary	✓	✓	✓	✓	✓
<b>Type</b>					
All-season	—	—	—	—	✓

# Accessories<sup>40</sup>



- Alloy Wheel Locks
- Alloy Wheel Locks (Black)
- Blackout Emblem Overlays
- Door Edge Guards
- Front Accent Lamps for Camry Models w/o Driver Assist
- Front Accent Lamps w/ Driver Assist
- Lower Rocker Applique
- Mudguards
- Paint Protection Film <sup>\*1</sup>
- Rear Bumper Appliqué (Black)



- All-Weather Floor Liners <sup>\*2</sup>
- Cargo Tote <sup>\*3</sup>
- Cargo Tray <sup>\*4</sup>
- Carpet Floor Mats <sup>\*5</sup>
- Cargo Carpet
- Coin Holder/ Ashtray Cup
- Door Sill Protectors
- Dual USB Power Port (Rear Only)
- Emergency Assistance Kit
- First Aid Kit

<sup>\*1</sup>Genuine Toyota Paint Protection by 3M is designed for specific sections of the vehicle most prone to chipping and may vary depending on vehicle model. Select applications may require an additional charge. Toyota Genuine Accessory Warranty only applies when the installation is performed by a trained, Toyota-approved installer. Please see Toyota dealer for details.

<sup>\*2</sup>This floor mat/liner was designed specifically for use in your model and model year vehicle and SHOULD NOT be used in any other vehicle. To avoid potential interference with pedal operation, each mat/liner must be secured with its fasteners. Do not install a floor mat/liner on top of an existing floor mat.

<sup>\*3</sup>Cargo and load capacity limited by weight and distribution. Always properly secure all items and cargo area.

<sup>\*4</sup>Cargo and load capacity are limited by weight and distribution. Always properly secure cargo and cargo area.

<sup>\*5</sup>This floor mat/liner was designed specifically for use in your model and model year vehicle and SHOULD NOT be used in any other vehicle. To avoid potential interference with pedal operation, each mat/liner must be secured with its fasteners. Do not install a floor mat/liner on top of an existing floor mat.

# Colors

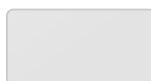
## Exterior



Cavalry Blue



Predawn Gray Mica



Ice Edge

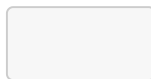


Ice Cap


Celestial Silver  
Metallic

Midnight Black  
Metallic


Reservoir Blue



Wind Chill Pearl



Supersonic Red


Wind Chill Pearl  
with Midnight  
Black Metallic roof

Underground with  
Midnight Black  
Metallic roof

## Interior


Ash Perforated  
Leather Trim

Black SofTex®<sup>17</sup>  
Trim


Macadamia Fabric



Black Fabric


Ash SofTex®<sup>17</sup>  
Trim


Ash Fabric


Black w/ Red  
Fabric

1. Ratings earned on premium unleaded gasoline with an octane rating of 91 or higher. Vehicle performance will decrease if premium fuel is not used.
2. EPA-estimated 28 city/39 hwy/32 combined mpg for 2024 Camry LE, SE and SE Nightshade Edition; 27 city/38 hwy/31 combined mpg for 2024 Camry XSE 4-Cylinder; 22 city/32 hwy/26 combined mpg for 2024 Camry XSE V6; 21 city/31 hwy/25 combined mpg for 2024 Camry TRD; 51 city/53 hwy/52 combined mpg for 2024 Camry LE Hybrid; and 44 city/47 hwy/46 combined mpg for 2024 Camry SE Hybrid, XLE Hybrid and XSE Hybrid. Use for comparison purposes only. Your mileage will vary for many reasons, including your vehicle's condition and how/where you drive. See [www.fueleconomy.gov](http://www.fueleconomy.gov).
3. Drivers should always be responsible for their own safety when driving. Please, always pay close attention to your surroundings and drive safely. Toyota Safety Sense effectiveness is dependent on many factors including road, weather and vehicle conditions. Drivers are responsible for their own safe driving. Always pay attention to your surroundings and drive safely. See Owner's Manual for additional limitations and details.
4. For Toyota hybrid, plug-in hybrid, and fuel cell and battery electric vehicles beginning with model year 2020, the hybrid (HV) battery is covered for 10 years from original date of first use or 150,000 miles, whichever comes first. Coverage is subject to the terms and conditions of your New Vehicle Limited Warranty. See Owner's Warranty and Maintenance Guide for details
5. Use only if aware of circumstances surrounding vehicle and it is legal and safe to do so (e.g., do not remotely start engine if vehicle is in an enclosed space or vehicle is occupied by a child). Toyota's Remote Connect depends on an operative telematics device, a cellular connection, GPS signal strength and other factors outside of Toyota's control, which can limit system functionality and availability. Service may vary by vehicle and region. Registration and Toyota app download required. Subscription required after trial. Terms of Use apply. Data charges may apply. Remote start/stop not available on manual-transmission-equipped vehicles. Services subject to change at any time without notice. See usage precautions and service limitations in Owner's Manual for additional details.
6. Specifications and standard or optional equipment are based on the information available at the time of programming this website and may change without prior notice. Some models illustrated are shown with optional equipment that involves extra costs and are subject to availability.

The color of the vehicle body may be different from the illustrations presented in this website. Not all color combinations apply to all models. For more details on other options, specifications, and accessories, contact your nearest authorized Toyota dealer.

Fuel Price and Traffic Apps included in Toyota Entune App Suite 3.0, are not available in Puerto Rico and the US Virgin Islands.

Toyota Safety Connect, Destination Assist, Remote Connect and Service Connect are not available in the US Virgin Islands.

Wi-Fi and Dynamic Navigation are not available in Puerto Rico and the US Virgin Islands.

7. Toyota de Puerto Rico, Corp. is the authorized dealer of Toyota vehicles in Puerto Rico and the United States Virgin Islands. Toyota authorized dealers are commercial entities separate from Toyota de Puerto Rico, Corp. Specifications and standard or optional equipment are based on the information available at the time of programming this website and may change without prior notice. Some models illustrated are shown with optional equipment that involves extra costs and are subject to availability. The Total Suggested Retail Price, or "TSRP" includes taxes and the Delivery, Processing and Handling Fee. (Historically, vehicle manufacturers and distributors have charged a separate fee for processing, handling and delivering vehicles to dealerships. Toyota's charge for these services is called the "Delivery, Processing and Handling Fee" and is based on the value of the processing, handling and delivery services Toyota provides as well as Toyota's overall pricing structure. Toyota may make a profit on the Delivery, Processing and Handling Fee.) Excludes license, title and available or regionally required equipment. For more details on other options, specifications and accessories, contact your nearest authorized Toyota dealer.
8. EPA-estimated 28 city/39 hwy/32 combined mpg for 2024 Camry LE, SE and SE Nightshade Edition; 27 city/38 hwy/31 combined mpg for 2024 Camry XSE 4-Cylinder; 22 city/32 hwy/26 combined mpg for 2024 Camry XSE V6; 21 city/31 hwy/25 combined mpg for 2024 Camry TRD; 51 city/53 hwy/52 combined mpg for 2024 Camry LE Hybrid; and 44 city/47 hwy/46 combined mpg for 2024 Camry SE Hybrid, XLE Hybrid and XSE Hybrid. Use for comparison purposes only. Your mileage will vary for many reasons, including your vehicle's condition and how/where you drive. See [www.fueleconomy.gov](http://www.fueleconomy.gov).
9. MPGe is the EPA equivalent of gasoline fuel efficiency for electric mode operation. Battery capacity will decrease with time and use. See [www.fueleconomy.gov](http://www.fueleconomy.gov)
10. ToyotaCare covers normal factory scheduled maintenance for two years or 25,000 miles, whichever comes first. Certain models require a different maintenance schedule as described in their *Maintenance Guide*. 24-hour Roadside Assistance is also included for two years, unlimited mileage. Roadside Assistance does not include parts and fluids, except emergency fuel delivery. See Toyota dealer for details and exclusions. Valid only in U.S Virgin Islands and Puerto Rico.
11. ToyotaCare covers normal factory scheduled maintenance for two years or 25,000 miles, whichever comes first. Certain models require a different maintenance schedule as described in their *Maintenance Guide*. 24-hour Roadside Assistance is also included for two years, unlimited mileage. Roadside Assistance does not include parts and fluids, except emergency fuel delivery. See Toyota dealer for details and exclusions. Valid only in U.S Virgin Islands and Puerto Rico.
12. Extra-cost color.
13. Rated for 12 volts/10 amps. See Owner's Manual for additional limitations and details.
14. May not be compatible with all mobile phones, smart devices, tablets, e-readers, MP3/WMA players and like models.
15. When the system is on and the vehicle is in Drive, Brake Hold may temporarily keep the brakes engaged after the driver brings the vehicle to a complete stop. See Owner's Manual for limitations.
16. The Tire Pressure Monitor System alerts the driver when tire pressure is critically low. For optimal tire wear and performance, tire pressure should be checked regularly with a gauge; do not rely solely on the monitor system. See Owner's Manual for additional limitations and details.
17. SofTex® is a registered trademark of Toyota Motor Sales, U.S.A., Inc.
18. A compatible Bluetooth®-enabled phone must first be paired. Phone performance depends on software, coverage and carrier. The Bluetooth® word mark and logos are registered trademarks of Bluetooth SIG, Inc. Use of such marks by Toyota is under license.
19. Dynamic Radar Cruise Control is designed to help the driver and does not substitute safe and alert driving. The system's effectiveness is dependent on many factors, such as weather, traffic and road conditions. Consult the Owner's Manual for details.
20. Lane Departure Alert with Steering Assist is designed to read visible lane markers under certain conditions and provide visual and audio alerts if it detects inadvertent lane departure. It is not a system that prevents collisions nor does it substitute safe and alert driving. Its effectiveness is dependent on many factors. Consult the Owner's Manual for details.
21. EV Mode lets you operate solely on battery power at low speeds for short distances and in limited circumstances, such as in a parking garage. Different conditions may prevent or limit usage. See your Owner's Manual for instructions and limitations.
22. This floor mat/floor liner was designed specifically for use in your model and model year vehicle and SHOULD NOT be used in any other vehicle. To avoid potential interference with pedal operation, each mat/liner must be secured with its fasteners. Do not install a floor mat/floor liner on top of an existing floor mat/floor liner.
23. HomeLink® and the HomeLink® house icon are registered trademarks of Gentex Corporation.
24. Vehicle user interface is a product of Google and its terms and privacy statement apply. Requires compatible smartphone connected with an approved data cable into the USB media port, and data plan rates apply. Apps and services vary by phone carrier and are subject to change at any time without notice. Android, Android Auto and Waze are trademarks of Google.
25. Connected Services depends on an operative telematics device, a cellular connection, navigation map data, GPS signal strength and other factors outside of Toyota's control, all of which can limit system functionality or availability, including access to response center and emergency support. Service may vary by vehicle and region. Subscription required after trial. Terms of Use apply. Data charges may apply. Apps and services subject to change at any time without notice.

Fuel Price and Traffic Apps included in Toyota Entune App Suite 3.0, are not available in Puerto Rico and the US Virgin Islands.

Toyota Safety Connect, Destination Assist, Remote Connect and Service Connect are not available in the US Virgin Islands.

Wi-Fi and Dynamic Navigation are not available in Puerto Rico and the US Virgin Islands.

Drive Connect Capability — with Cloud Navigation, including Googled points-of-interest (POI) data and Intelligent Assistant, including Hey Toyota and Destination Assist. Subscription required. Subject to availability of 4G network.

See <https://www.toyota.com/connected-services> for details. To learn about Toyota's data collection, use, sharing and retention practices, please visit <https://www.toyota.com/privacyvts>. Stolen vehicle police report required to use Stolen Vehicle Locator.

26. Safety Connect® depends on an operative telematics device, a cellular connection, GPS signal strength and other factors outside of Toyota's control, all of which can limit system functionality or availability, including access to response center and emergency support. Stolen vehicle police report required to use Stolen Vehicle Locator. Some features may require the Toyota app. Registration required. Subscription required after trial. Service subject to change at any time without notice. Terms of Use apply. Data charges may apply. Service may vary by vehicle and region. See usage precautions and service limitations in Owner's Manual.
27. Service Connect depends on an operative telematics device, a cellular connection, navigation map data, GPS signal strength and other factors outside of Toyota's control, which can limit functionality or availability. Service may vary by vehicle and region. Registration required. Service subject to change at any time without notice. Terms and conditions of subscription service agreement apply. See usage precautions and service limitations in Owner's Manual for additional details. The Service Connect trial period is at no extra cost and begins on the original date of purchase or lease of a new vehicle. After the respective trial period expires, enrollment in paid subscription is required to access the service.
28. The Pre-Collision System (PCS) with Pedestrian Detection (PD) is designed to determine if impact is imminent and help reduce impact speed and damage in certain frontal collisions involving a vehicle or a pedestrian. PCS w/PD is not a substitute for safe and attentive driving. System effectiveness depends on many factors, such as speed, size and position of pedestrian and weather, light and road conditions. See Owner's Manual for additional limitations and details.
29. Automatic High Beams work when the car is driven at speeds greater than 21 miles per hour. Certain factors such as dirty windshield, weather, natural light and the terrain may limit its efficacy, requiring that the driver operate the high beams manually. Consult the Owner's Manual for more details.
30. Lane Tracing Assist is designed to read visible lane markers and detect other vehicles under certain conditions. When potential lane departure is detected, LTA provides a visual warning and either an audible alert or vibration in the steering wheel and can apply a slight steering force. It is not a collision-avoidance system or a substitute for safe and attentive driving. Effectiveness is dependent on many factors including road, weather and vehicle conditions. See Owner's Manual for additional limitations and details.
31. Full-Speed Range Dynamic Radar Cruise Control is designed to assist the driver and is not a substitute for safe and attentive driving practices. System effectiveness is dependent on road, weather and traffic conditions. See Owner's Manual for additional limitations and details.
32. Vehicle Stability Control is not a substitute for safe and attentive driving practices. Factors including speed, road conditions, weather and steering input can affect whether VSC will be effective. See Owner's Manual for limitations.
33. Smart Stop Technology® operates only in the event of certain contemporaneous brake and accelerator pedal applications. When engaged, the system will reduce power to help the brakes bring the vehicle to a stop. Factors including speed, road conditions and driver input can all impact stopping distance. Smart Stop Technology® is not a substitute for safe and attentive driving and does not guarantee instant stopping. See Owner's Manual for additional limitations and details.
34. Building and/or parking structures may limit system effectiveness. Stolen vehicle police report required to use Stolen Vehicle Locator. For additional assistance contact the Toyota Brand Engagement Center at 1-800-331-4331.
35. Requires cellular network availability, a cellular connection and GPS signal. May not work in all areas. Service may vary by vehicle and region. See Toyota dealer for details and exclusions.
36. A Safety Connect® trial is included for up to 10 years on select vehicles with paid Connected Services packages. See your Toyota dealer for details. 4G network dependent.
37. Whiplash-Injury-Lessening front seats can help reduce the severity of whiplash injury in certain rear-end collisions.
38. The Rear-Seat Reminder does not sense objects in the rear seat. The Rear-Seat Reminder is designed to recognize a unique rear-door opening pattern that may be consistent with an object being placed in the rear seating area. See Owner's Manual for additional details.
39. Cargo and load capacity limited by weight and distribution. Always properly secure cargo and cargo area.
40. Specifications and standard or optional equipment are based on the information available at the time of programming this website and may change without prior notice. Some models illustrated are shown with optional equipment that involves extra costs and are subject to availability.

The color of the vehicle body may be different from the illustrations presented in this website. Not all color combinations apply to all models. For more details on other options, specifications and accessories, contact your nearest authorized Toyota dealer.



For more details on the Toyota Mobility program, visit [www.toyotapr.com/sobretoyota/mobility](http://www.toyotapr.com/sobretoyota/mobility) or contact the Customer Experience Center at **1.877.855.8377**.